



WE CAN HELP YOU BUILD

# PRODUCTS

---

## OCTG Products

01. Drill Collars
02. Drill Pipes
03. Drill String accessories
04. Tubing Pipes
05. Casing
06. Drill String accessories

## Other Products

01. Line Pipes
02. Jack Pumps
03. Triplex Pumps
04. Xmas Tree
05. Blow out preventors
06. Electric Cables
07. Hydraulic/Manual Valves
08. Flowline Products

## Drilling Rigs

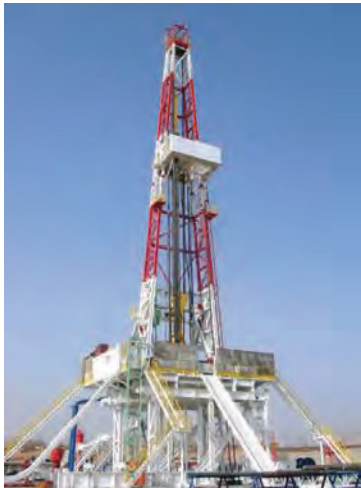
01. Drilling Land Rig
02. Drilling Offshore Rig

**PRODUCTS**

# Drilling Rigs

## 01. Skid-Mounted Drilling Rigs

AC/VFD Drive Drilling Rigs ranging from 1000 HP -3000HP Rigs.



PRODUCTS

# Drilling Rigs

## 02. Truck / Trailer Mounted Drilling Rigs

Truck Mounted Drilling Rigs ranging from 450 HP -1000HP Rigs



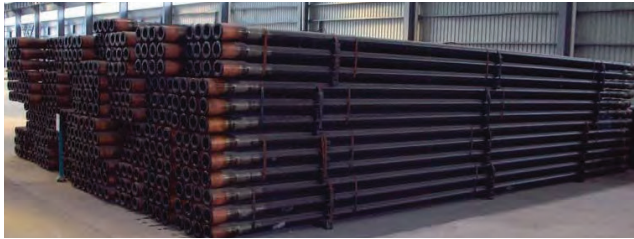


PRODUCTS

# OCTG Products

## Drill Pipes (API-5D Specs)

All kinds of Drill pipes ranging from 2-3/8 to 6-5/8 inches with EU upset Type and of E-75; X-95; G-105; S-135 Grades.



## Casing (API-5CT Specs)

From 4-1/2 to 20 inches seamless casing pipes. Premium connections are available on request. P - plain end, S - short round thread, B - butress, L - long round thread



## Tubing (API-5CT)

Summit4 provides all kinds of tubing pipes ranging from 2-3/8 to 4-1/2 inches. Premium connections are available on request.



## Heavy Weight Drill Pipes (API-7-1 Specs)

Welded and integral heavy weight drill pipes; their sizes are from 3-1/2 to 6-5/8 inches.



## Drill Collars (API-7-1 Specs)

Slick drill collars, spiral drill collars and non-magnetic drill collars; their sizes are from 3-1/8 to 11 inches.



## Line Pipes (API-5L)

Various line pipes including seamless line pipes (OD from 2-3/8" to 24", steel grade A, B, X42 - X80) and ERW line pipes.



**PRODUCTS**

# Downholes Tools

A complete line of downhole tools including drill collars, downhole motors, hydraulic and mechanical drilling jars, shock subs, stabilizers, reamers, hole openers, and drill bits, etc.

## Drilling Jars



## Stabilizer



## Hole Opener



## Stabilizers



**PRODUCTS**

# Flowline products

Our Principal is a famous supplier of flowline products to the oilfield industry in both domestic and international market based on the design and manufacturing technologies introduced from SPM and FMC in the 1980s and continuous innovations for over 40 years.

Our family of flowline products includes swivel joints, plugs valves, check valves, hose loops, hammer unions, integral connections and pipe, etc., and we can also supply various customized manifolds for a wide range of application.

Swivel joints, pup joints, hose loops, plug valves, integral fittings, hammer unions, etc.

**Swivel Joint**



**Plug Valve**



**Hammer Union**



**Pub Joint**



**Integral fittings**



**Hose Loop**



**PRODUCTS**

# Cementing Equipment

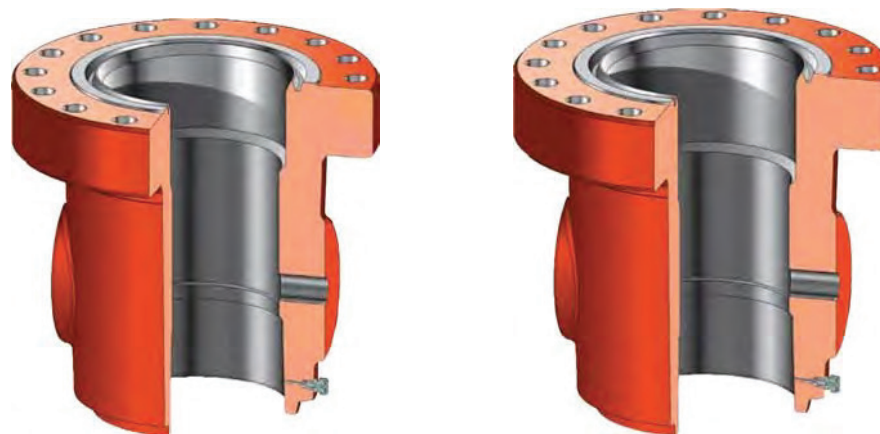
Trailer-, skid-or truck-mounted cementing units are available for sale. State-of-the-art automation control mixing (ACM) system can ensure the accuracy and consistency of the slurry density. These cementing units can be configured with triplex and quintuplex plunger pumps with proprietary technologies.

## Truck-Mounted Cementing Unit



## Casing Head (API-6A Spec)

Casing Heads use a straight-bore bowl design that prevents damage to sealing areas from drilling tools and prevents test-plug and bowl-protector wedging problems under pressure. Available sizes from 9 to 22-3/4 inches with working pressure ranges between 2000 – 5000 psi.

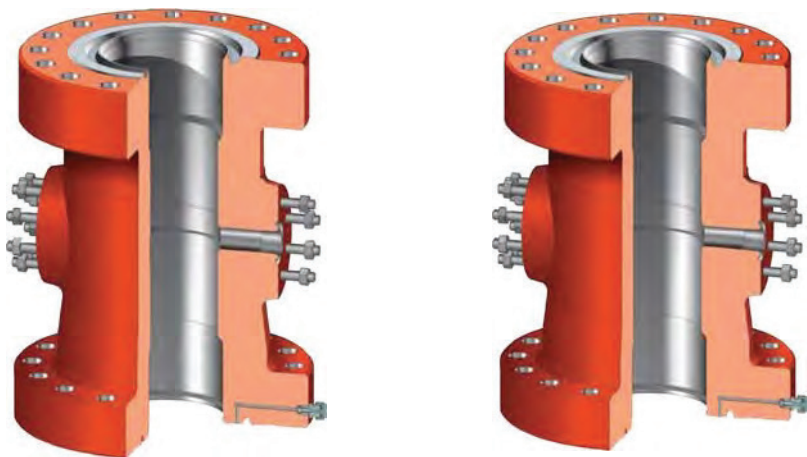




**PRODUCTS**

# Casing Spool (API-6A Spec)

Casing Spools are designed with a straight bore bowl that prevents damage to sealing areas from drilling tools and prevents test-plug and bowl protector wedging problems under pressure. This straight-bore design also reduces maintenance costs and permits suspension of heavy casing loads. Casing Spools normally are furnished with studded outlets, but optional threaded outlets are available upon request. Bottom preparation can include PE seals or X-bushing secondary seals. HPE seals for high-performance frac-wells are available upon request. Casing Spools allow interchangeability between Casing Hangers.



Available sizes are from 11 to 13-3/8 inches with working pressure ranges between 2000 – 10,000 psi.



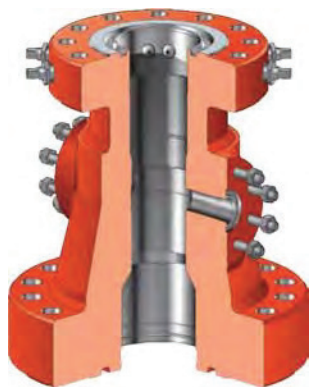
**PRODUCTS**

# Tubing Heads, Spools and Adaptors. (API-6A Specs)

Tubing Heads & Spool use a straight-bore bowl design for single and multiple completions in working pressures through 15,000 psi and in sizes to meet all multiple-completion requirements Bottom preparation can include PE seal or X-bushing secondary seals. HPE seals for high-performance frac-wells are available upon request.

Various sizes of Top and bottom Flanges are available with the working pressure Available sizes are from Top Flange ranges from 7-1/16 Inches and Bottom Flange 13-3/8 Inches with the working Pressure ranges between 3000 Psi to 15,000 Psi.

## Tubing Head Adapters



## B1 Tubing Head Adapter



## B2P Tubing Head Adapter



Various types of Tubing adaptors also available.

**PRODUCTS**

# Frac Components

Frac valves - FC and FLS style, manual, ball screw operated, and hydraulic, size 4-1/16", 5-1/8" and 7-1/16", pressure ratings 5M, 10M, 15M and 20M. Goat heads (frac heads), 4-1/16", 5-1/8" 7-1/16", with 5M, 10M, 15M pressures, 4 or 6 side outlets, and various top bottom studded and langed connections. Adapter langes, spools, and other langes, various sizes and pressure ratings.

**BSO Valve**



**Hydraulic Valve**



**FC Gate Valve**



**Goat Head**



**Spacer Spool**



**Adapter Flange**



**PRODUCTS**

# Mud Pump Parts & Expendables

High chrome sleeve liners, zirconia ceramic liners, urethane bonded pistons with long service life, high temperature and plate type design valves and seats available in API 4 thru 8 sizes to fit all major mud pumps, a complete line of urethane bonded pistons, replaceable rubber pistons, rubber bonded pistons, a full range of full open, 3 web, 4 web interchangeable luid end modules and accessories, for various OEM's mud pumps such as National, Emsco, Bomco, Ideco and Oilwell etc.

## High Chrome Liners



## Ceramic Liners



## Urethane-Bonded Pistons



## Rubber Pistons



## Module



## Valves and Seats



## PRODUCTS

# Annular Blowout Preventers (API-16A Specs)

Dapsang Energy Annular Blowout Preventers are compact BOP's which can reliably seal on most any shape or size in the preventer. It has proven to be able to seal on Kelley's, drill pipe, tool joints, drill collars and casing. The Integrated Annular also provides the ability to safely strip drill pipe in and out of the hole.

Wear rings on moving parts reduce metal to metal contact thus improving preventer life Features :

- Strong and simple construction
- Hydrogen Sulfide service is standard
- Compact body saves between 15% and 20% in height over some competitive annular BOP's
- Reliable and field proven packing element provides long sealing life.
- Only two hydraulic connections are required making the hydraulic system extremely simple
- Trash ring prevents debris from dropping into the operating chambers during field replacement of packing rubber
- Wear rings on moving parts reduce metal to metal contact thus improving preventer life
- Meets all API 16A and NACE requirements.
- Working pressure from 2000 Psi to 15000 Psi

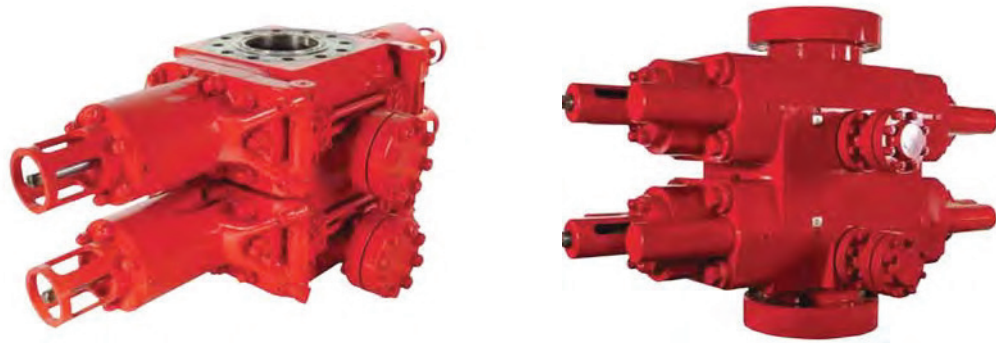




**PRODUCTS**

# Ram Blowout Preventers (API-16A)

LWP, LWS, SL/SLX, LXT style, and type U style ram blowout preventers; their sizes, models and technical specifications are in the following tables. Our blowout preventers are manufactured in accordance with API Specification 16A, Third Edition and NACE MR0175 per API Specification 16A, Temperature T20. They meet the applicable API and NACE requirements for H2S service



Working pressure from 2000 Psi to 15000 Psi

**PRODUCTS**

# BOP Parts

Annular and ram BOP parts for all the popular OEMs - packing elements, ram assemblies, ram blocks, ram rubbers, etc.

**Packing Element**



**Packing Element**



**Ram Blocks**



**Ram Blocks**



**Ram Blocks**



**Ram Rubber**



**PRODUCTS**

## Diverters

29-1/2", 500 psi diverters.



## Flanges



Various type of Flanges available  
from 1-13/16" - 26-3/4"

## Triplex Mud Pumps

Dapsang Energy provide various type of API 7K Spec Triplex mud pumps ranging from 500 HP to 2200 HP. Ratings are based on 90% mechanical efficiency and 100% volumetric efficiency.

